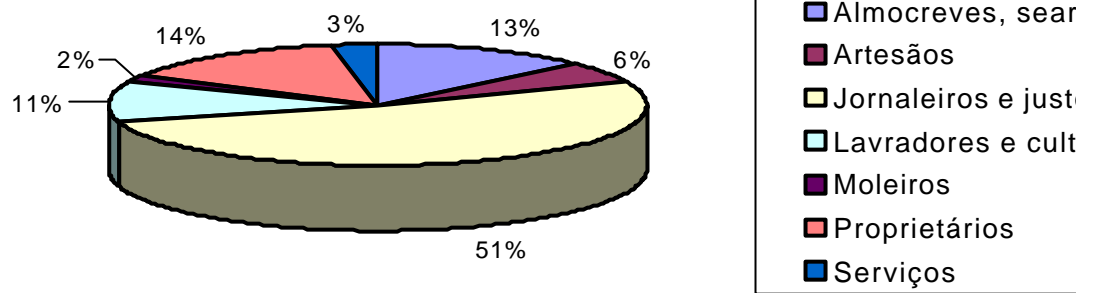


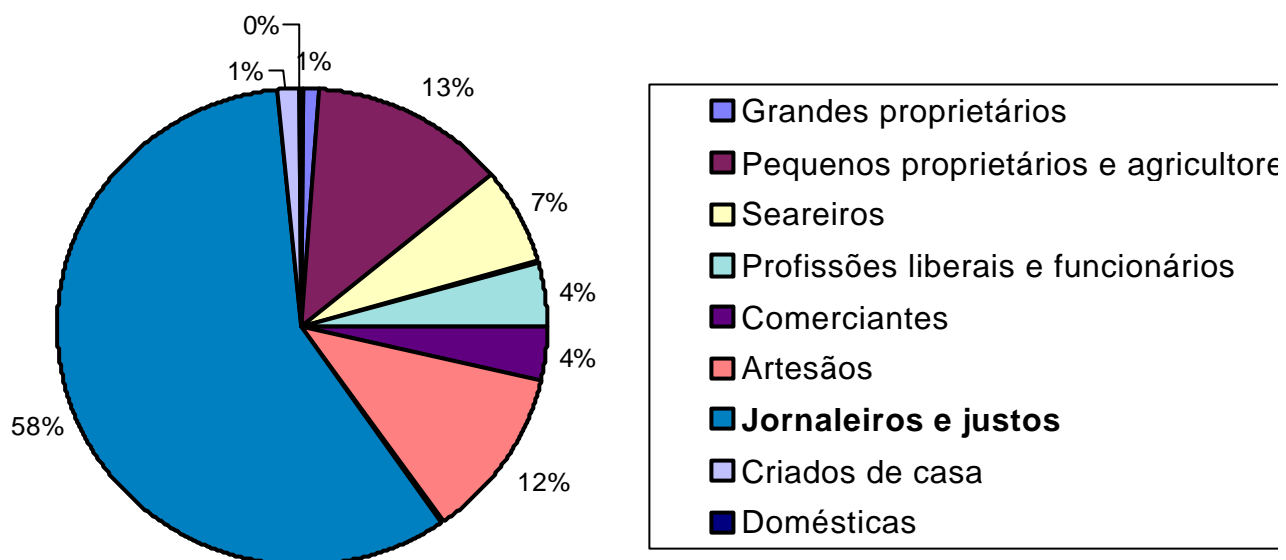
ANEXO:

Quadro I:

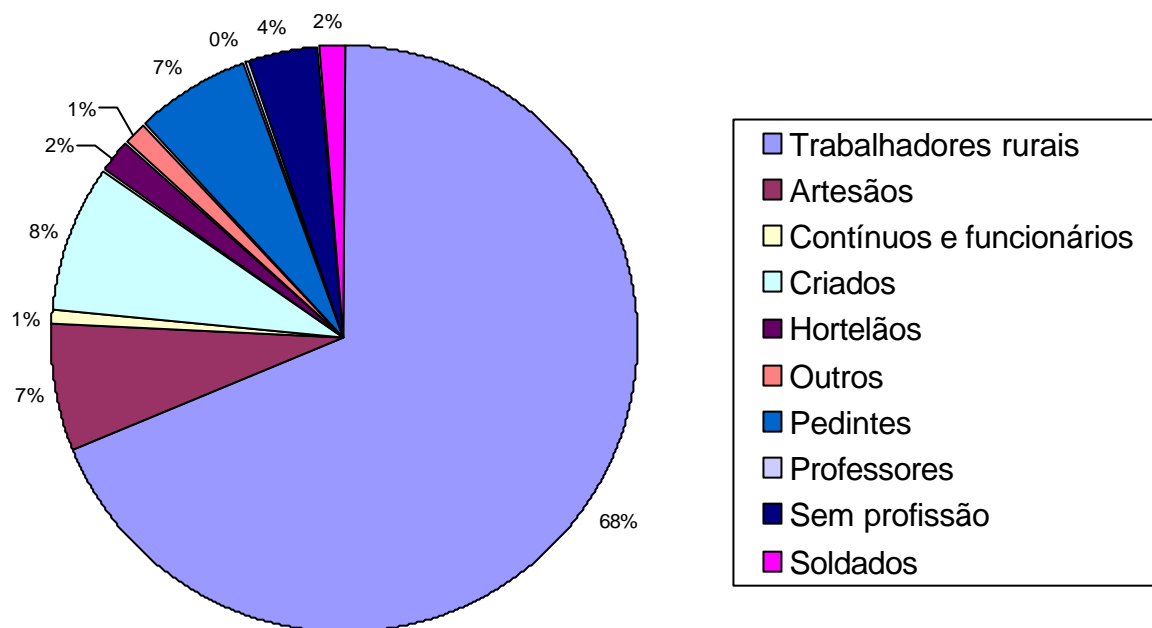
Estradas: resumo dos grupos sócio-profissionais (1863-1865)



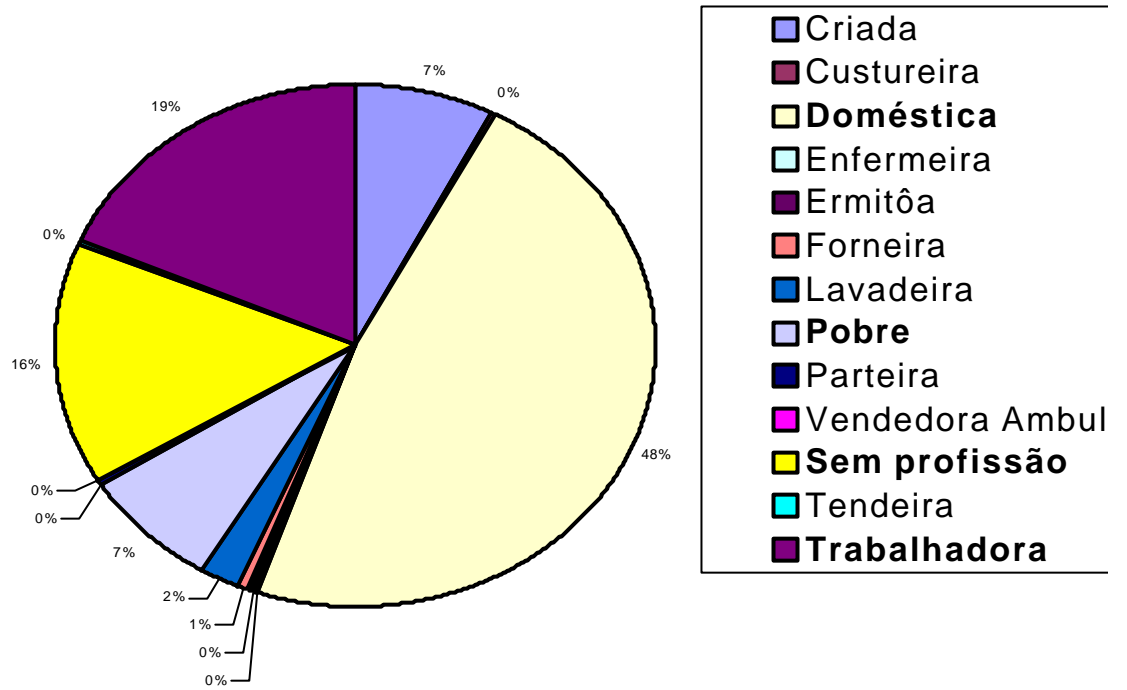
Quadro II: Recenseamento eleitoral no concelho de Avis, 1941



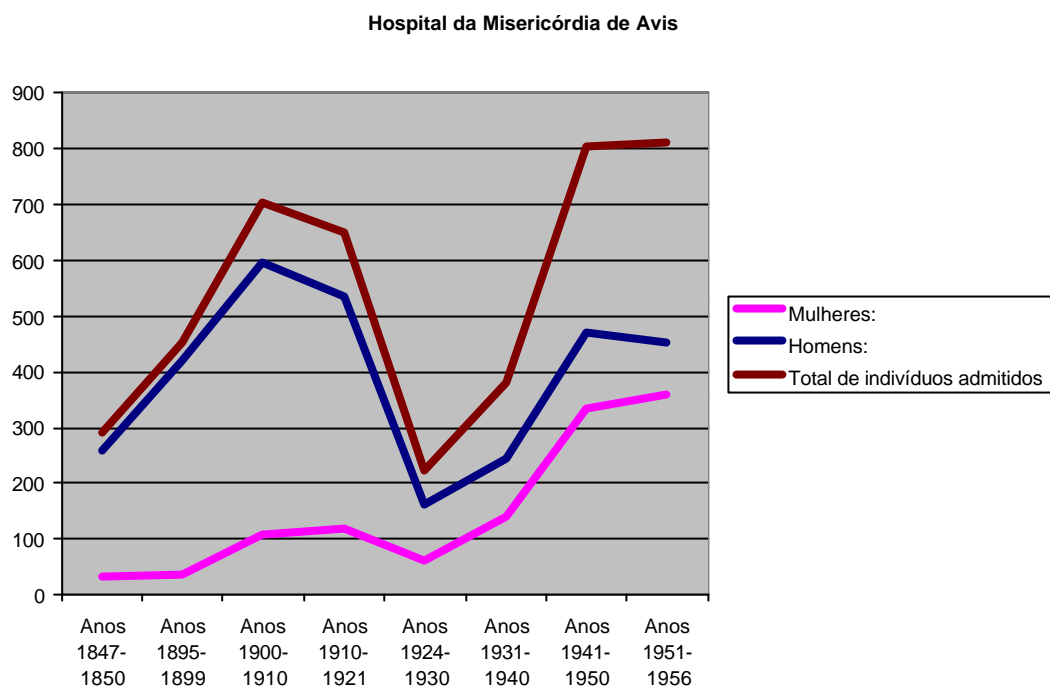
Quadro III: Resumo dos doentes do sexo masculino



Quadro IV: Resumo dos doentes do sexo feminino

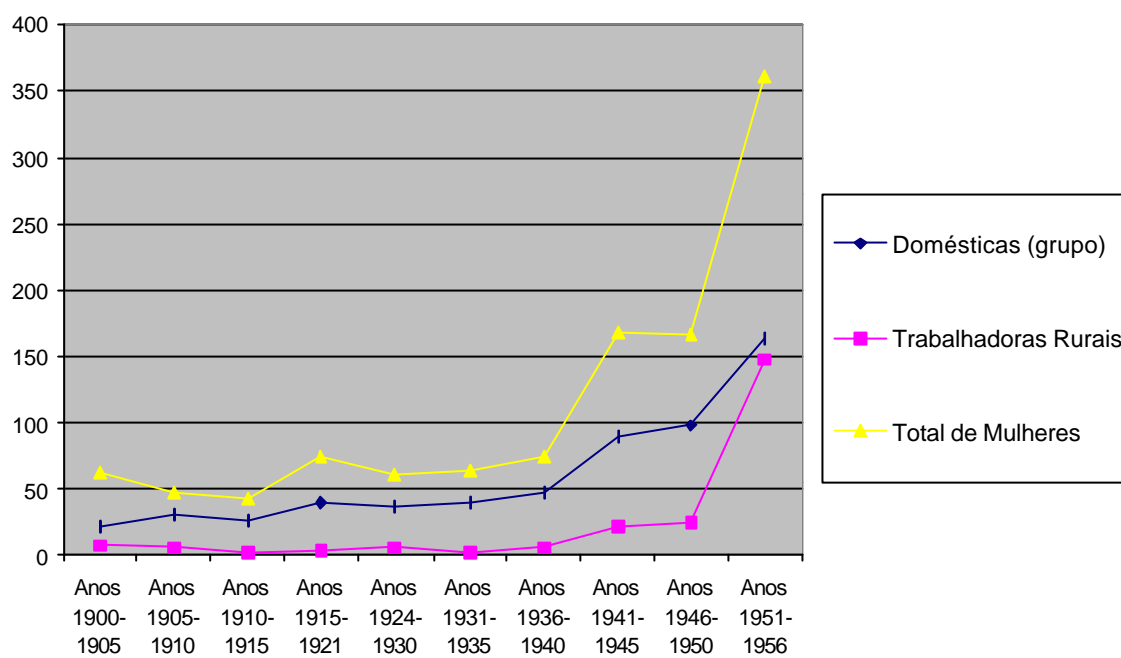


Quadro V – Doentes admitidos ao hospital de Misericórdia de Avis



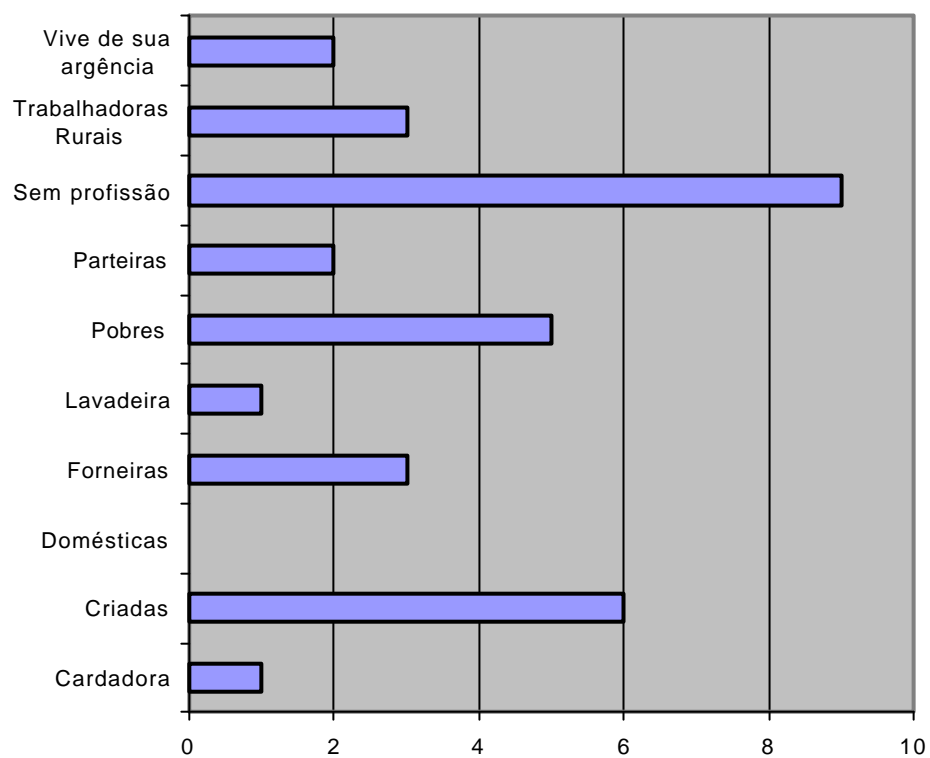
Quadro VI – As Mulheres no Hospital da Misericórdia, 1847 – 1956

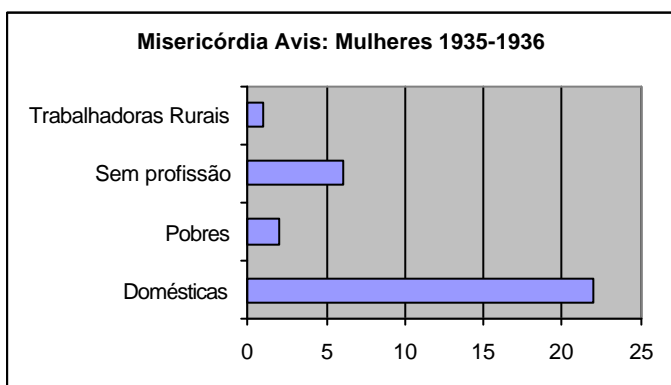
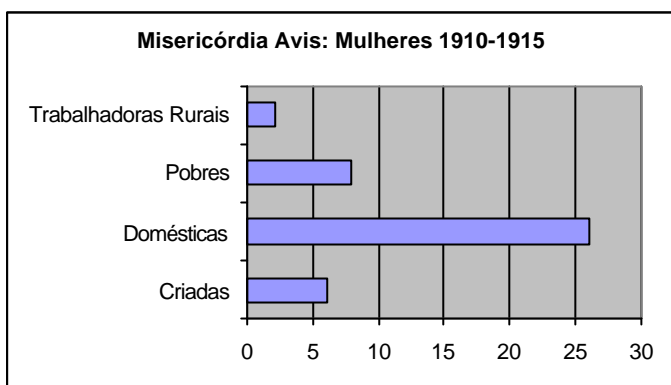
Hospital da Misericórdia de Avis: Domésticas e Jornaleiras



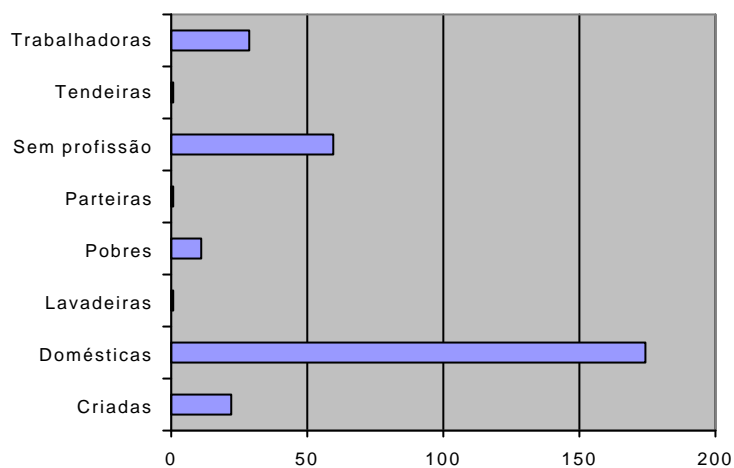
Quadros VII a XI: Doentes do Sexo Feminino

Misericórdia Avis: Mulheres 1847-1850





Misericórdia Avis: Mulheres 1937-1947



Misericórdia Avis: Mulheres 1948-1956

